

# **USER MANUAL**

---

## **3x3 USB VIDEO WALL CONTROLLER**

Enjoy the vivid world

## Introduction

The 3X3 video wall controller is able to data-push the video of USB 3.0 port to max. 9 displays to finish the splicing of the whole video pictures. USB 3.0 port support max.4K resolution input and output HD video pictures to displays .



## Features

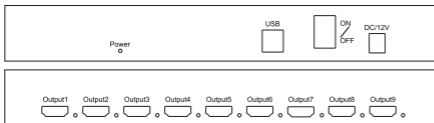
- \* Support USB3.0
- \* Support input highest resolution: 4k
- \* Support hdmi output
- \* Support the image 90 degree rotate
- \* Support discretionarily splicing mode, the max 9 displays.
- \* Support give best resolution for displays automatically.
- \* Support perfect image without stretch
- \* Support only Windows 10 system and 64 bit

## Specifications

USB version .....	USB 3.0
Input resolution .....	up to 4K

Output resolution ..... Max. 1080P  
 Input cable length ..... ≤1.5 M USB3.0 standard cable  
 Output cable length ..... ≤10M AWG26 HDMI standard cable  
 Max.working current..... 1.6 A  
 Power adaptor: ..... Input AC (50HZ, 60HZ) 100V-240V; Output: DC12V/2A  
 Working temperature range ..... (-10 ~ +55℃)  
 Dimension ..... 263x159x38(mm)  
 Weight ..... appr.1300g

## Physical interface diagram

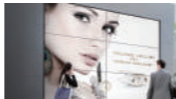


Port	Function description
Power	Power Indicator
ON/OFF	Power switch
USB	USB3.0 Video input
DC/12V	DC12V input, connect with 12V/2A power adaptor
Output 1~9	HDMI signal output port, indicate signal is outputting when the Indicator lighting

## Application scene



Outdoor video wall

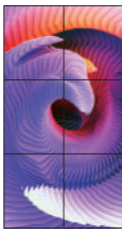
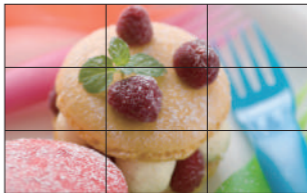


Shopping mall video wall

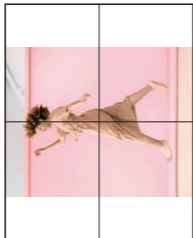


Monitor room

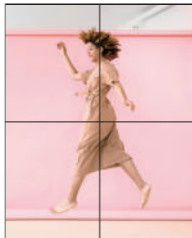
## Common splicing mode



## Image 90 degree rotate



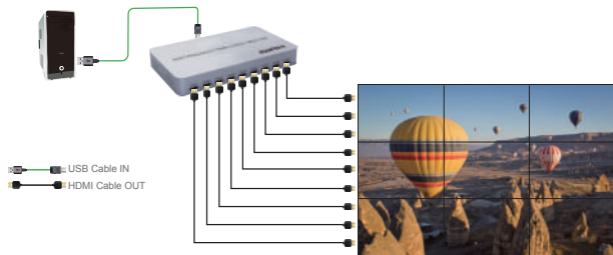
90 degree rotate



## Connection operation

1. Connect USB signal source and "USB" port with USB3.0 cable.
2. Connect 'HDMI Output' and HDMI port of TV with HDMI cable.
3. Connect the cable of adaptor and 'DC/12V' .

## CONNECTION DIAGRAM



# OPERATION INTERFACE OF APP

eg.: 3×3



- Video Wall Pixels: USB input resolution;
- Display Matrix: Splicing mode, for example the above 3×3;
- Monitor Resolution: HDMI output resolution;
- The 9 blue color lump on the bottom "Connected Display Monitors" which labeled "1-9" stand for the 9 displays.

Drag the each labeled lump in "Connected Display Monitors" into "Video Wall Topology" blank area where you prefer to finish the 3×3 video wall splicing.

## VIDEO WALL

07	08	01
04	03	06
09	05	02

## OPERATION INTERFACE



### NOTE:

Minimum requirements for PC:

- 1) CPU: Intel's Core i5 processor and Integrated Intel HD graphics 630-7500.
- 2) Memory bank: 8GB (2×4GB dual-channel) .

## THE PACKAGE INCLUDES

1. 3X3 USB video wall controller 1PCS
2. USB 3.0 A male to B male cable 1PCS
3. DC Power adapter 12V/2A 1PCS
4. User Manual 1PCS